



# PC-Security Service

## User Guide

Version 1.0

## Table of Content

1	Introduction.....	3
2	PC-Security Console.....	3
2.1	Open up the PC-Security Console .....	3
2.2	Console Interface .....	3
2.3	Getting Help.....	4
3	User Functions.....	4
3.1	Manually Started Scanning .....	4
3.2	Manually Started Updates.....	5
3.3	Handling Browser Pop-up Window and ActiveX Installation.....	6
4	License Key .....	7

## 1 Introduction

This document is for providing additional information on top of the Online Help accessible from the PC-Security Console that help you using the PC-Security. Thus, please refer to the Online Help for basic information on using PC-Security.

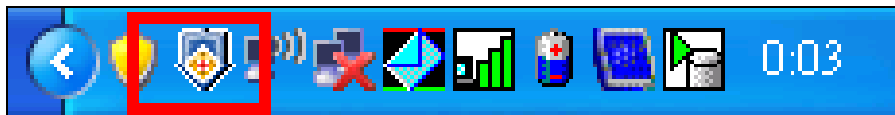
## 2 PC-Security Console

The PC-Security Console is a tool that is available for you to customize how the PC-Security works to meet your needs.

### 2.1 Open up the PC-Security Console

The PC-Security Console is a tool that is available for you to customize how the PC-Security works to meet your needs.

To open the PC-Security Console, double click on the PC-Security icon in lower right system tray.



*Note, by default, the PC-Security will start working when your PC boots up no matter whether the Console is opened or not.*

### 2.2 Console Interface

The Console interface shows the current protection and updates status at a glance, and let you make any necessary changes to meet your needs



#### Status:

To indicates whether your PC is being protected by PC-Security from virus and spyware attacks:

### Virus & Spy Protection:

To set the level of protection required for your needs. Choices are High, Normal, Off, and Custom. High level has the strongest protection, however, it requires more your PC resources. Level Normal is the recommended as it balances the general needs and PC resources that demanded.

*Note. if it is set to Off, your PC is vulnerable to virus and spyware attacks*

### Automatic Updates:

To set whether the virus and spyware definitions, and PC-Security software are checked for update automatically, and perform the actual update (if such available).

### Last update check:

To indicate when was the last update checking was carried out, and the result of it. You might perform an update check immediately by clicking on the “Check now” link

### Security News:

Show the number of security news that you received and not yet read. You might read all read and unread security news by clicking on the “View...” link

## 2.3 Getting Help

Help message on option and usage settings are always available at the Console. Simply by clicking the Help button at the lower left corner at every dialog windows, and the help message is context sensitive.

## 3 User Functions

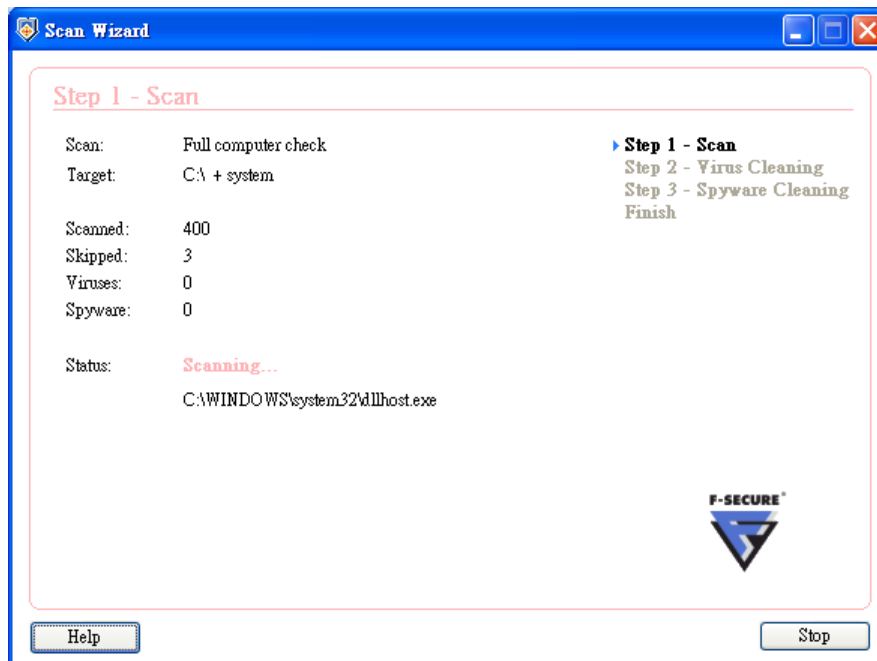
Generally, PC-Security will take care all the necessary scanning, blocking, and update automatically. However, in certain circumstances, you might want to perform scanning for specific locations or at your time of convenient, or check for updates immediately etc. In addition, you might also want to configure how PC-Security handle for ActiveX component and browser’s pop-up window.

### 3.1 Manually Started Scanning

To manually start a virus and spyware scan, follow the procedure below:



- Step 1: Select the “Virus & Spy Protection” tab from the left hand side menu
- Step 2: Click on the “Scan my computer” link
- Step 3: Select the scanning option that you desire
- Step 4: The scanning will begin, and the progress will be shown



If there is any virus or spyware found, you will be prompted for action, i.e. Disinfect, Delete, or Quarantine.

### 3.2 Manually Started Updates

To manually start a virus and spyware definition, and software update checking, follow the procedure below:

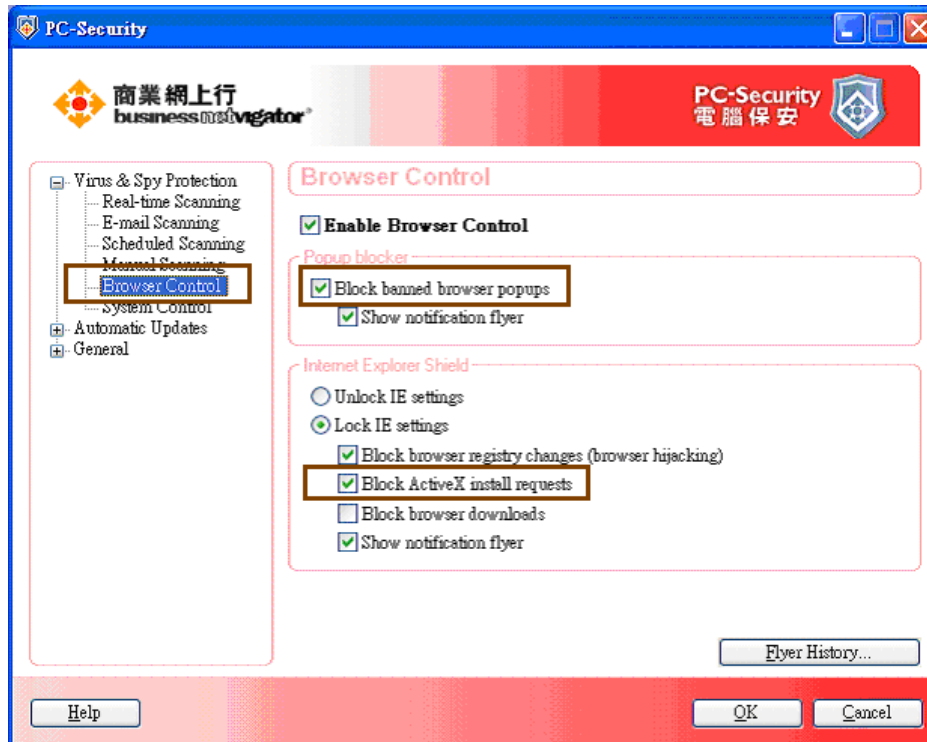


Step 1: Select the “Automatic Updates” tab from the left hand side menu

Step 2: Click on the “Check now” link. Once checked, the “Last update check” time will be updated. And if there is a new update, the update will be applied automatically.

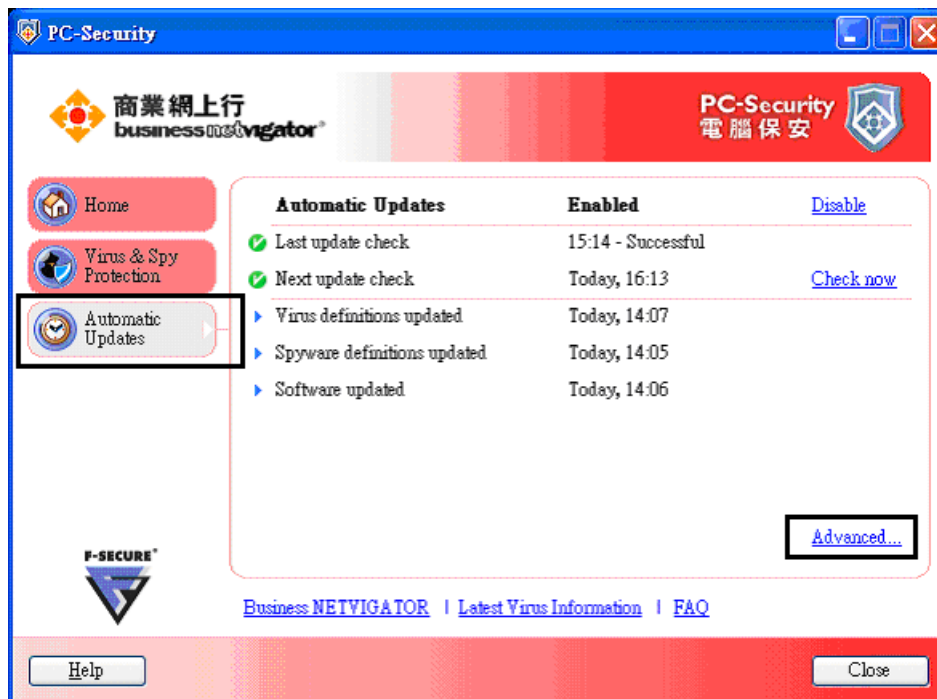
### 3.3 Handling Browser Pop-up Window and ActiveX Installation

By default, PC-Security stops browser’s pop-up window and ActiveX component’s installation. However, in certain circumstances, you might need to allow pop-up window to be shown on or ActiveX component to be installed into your PC. Follow the procedure below to allow the pop-up windows or installation of ActiveX component.



#### 4 License Key

Each installation of PC-Security requires a unique valid license key. To examine the license key used for the, follow the procedure below:



Step 1: Select the “Automatic Updates” tab from the left hand side menu

Step 2: Click on the “Advance...” link, the Advance option will appear



Step 3: Select the “My subscription” under the General section from the left hand side menu

Step 4: The license key used for the installation will be shown as the Subscription Number.

----- End -----